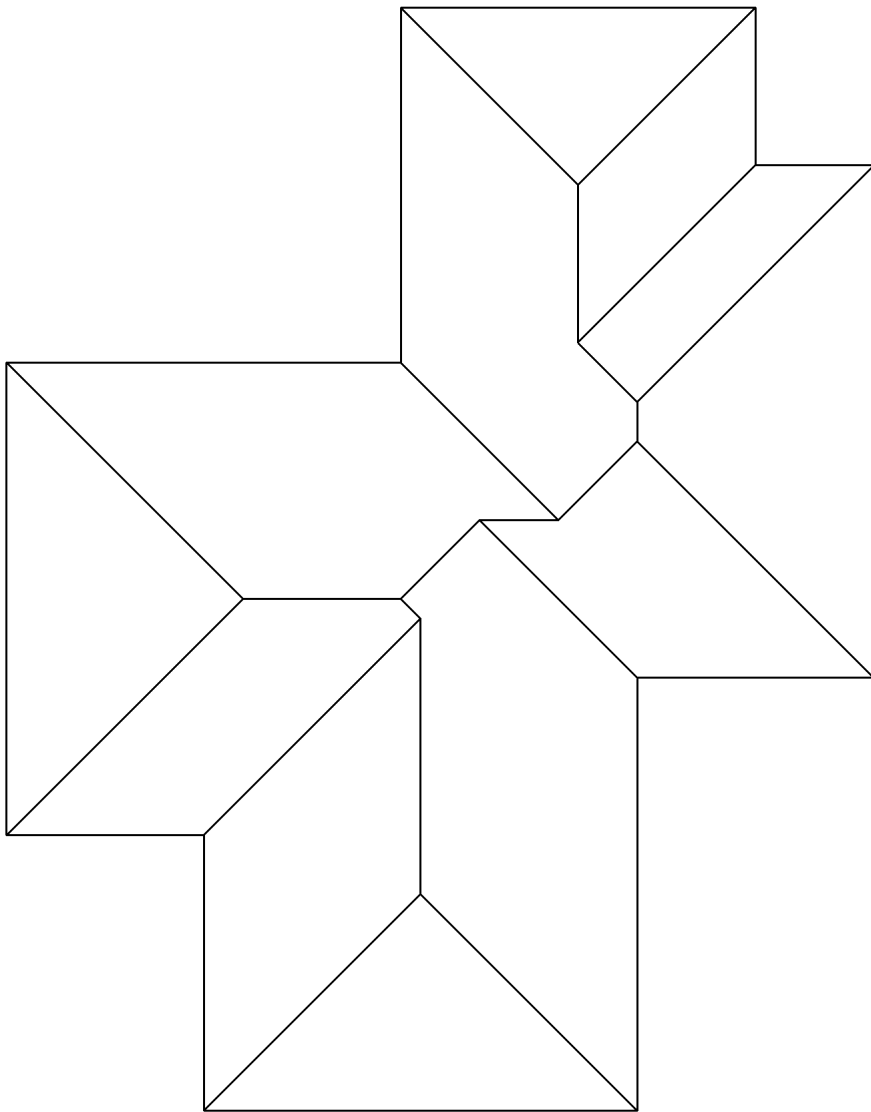


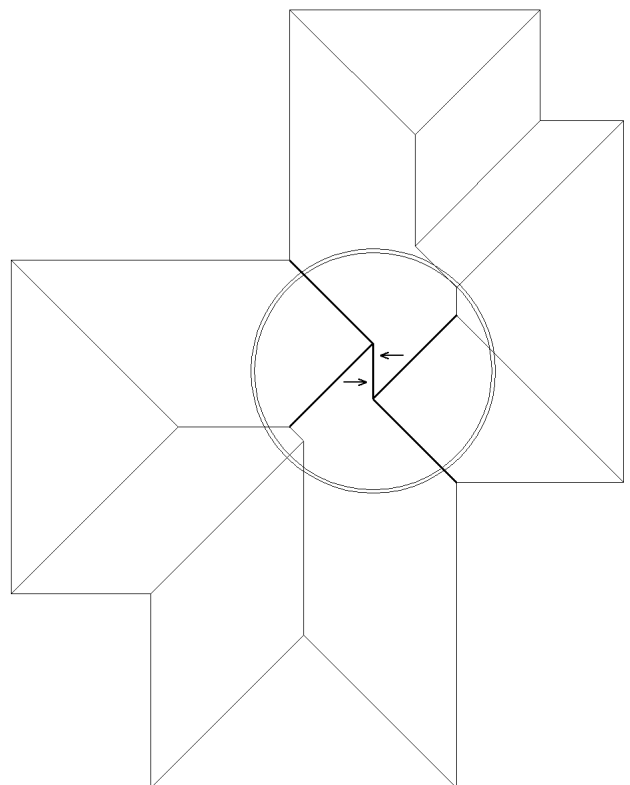
## Cvičení č. 12

**Příklad č. 44:** Narýsujte průmět zastřešení objektu rovinami konstantního spádu s okapovými hranami v jedné rovině a s případnými zakázanými okapy.

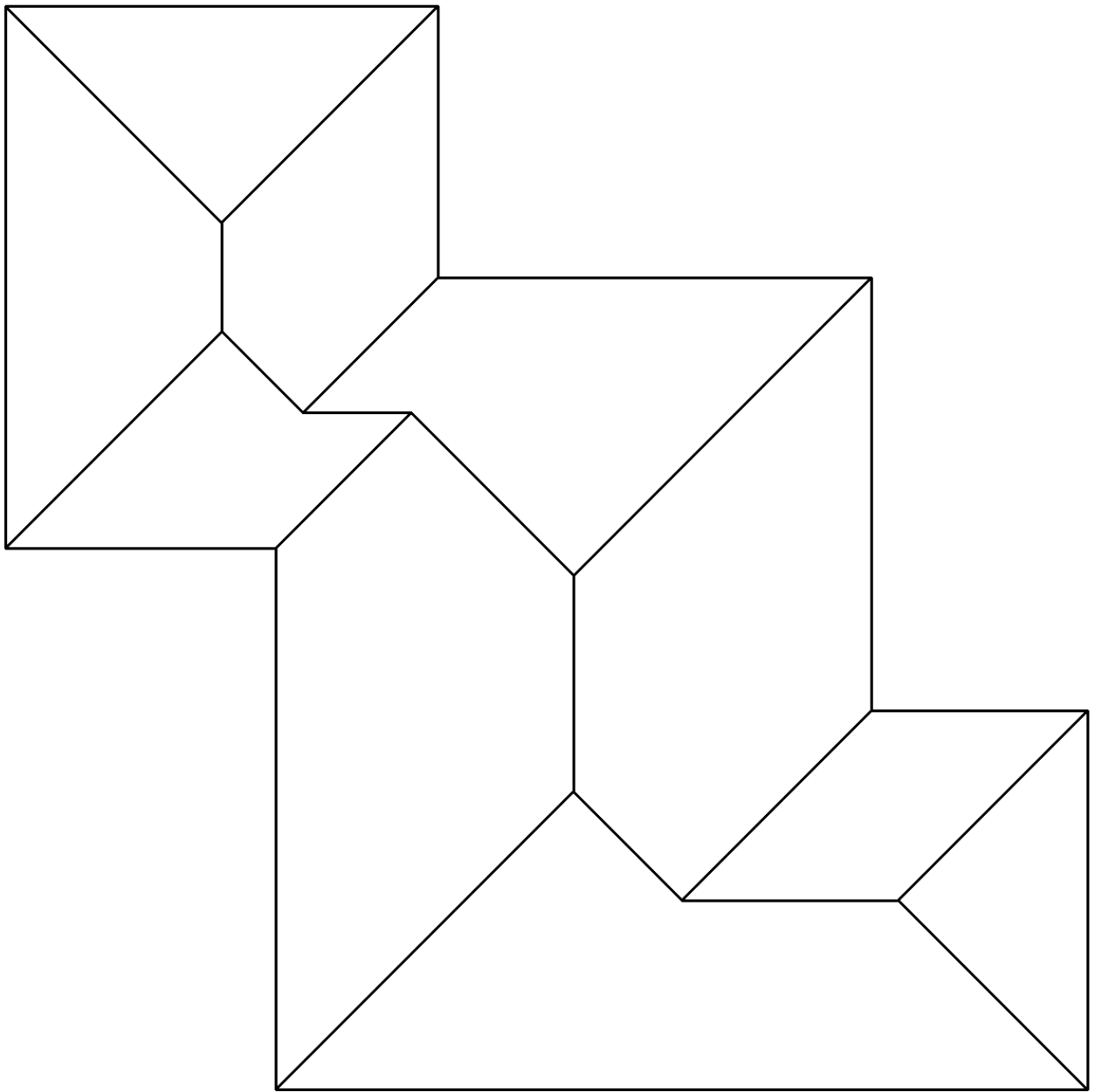
(a)



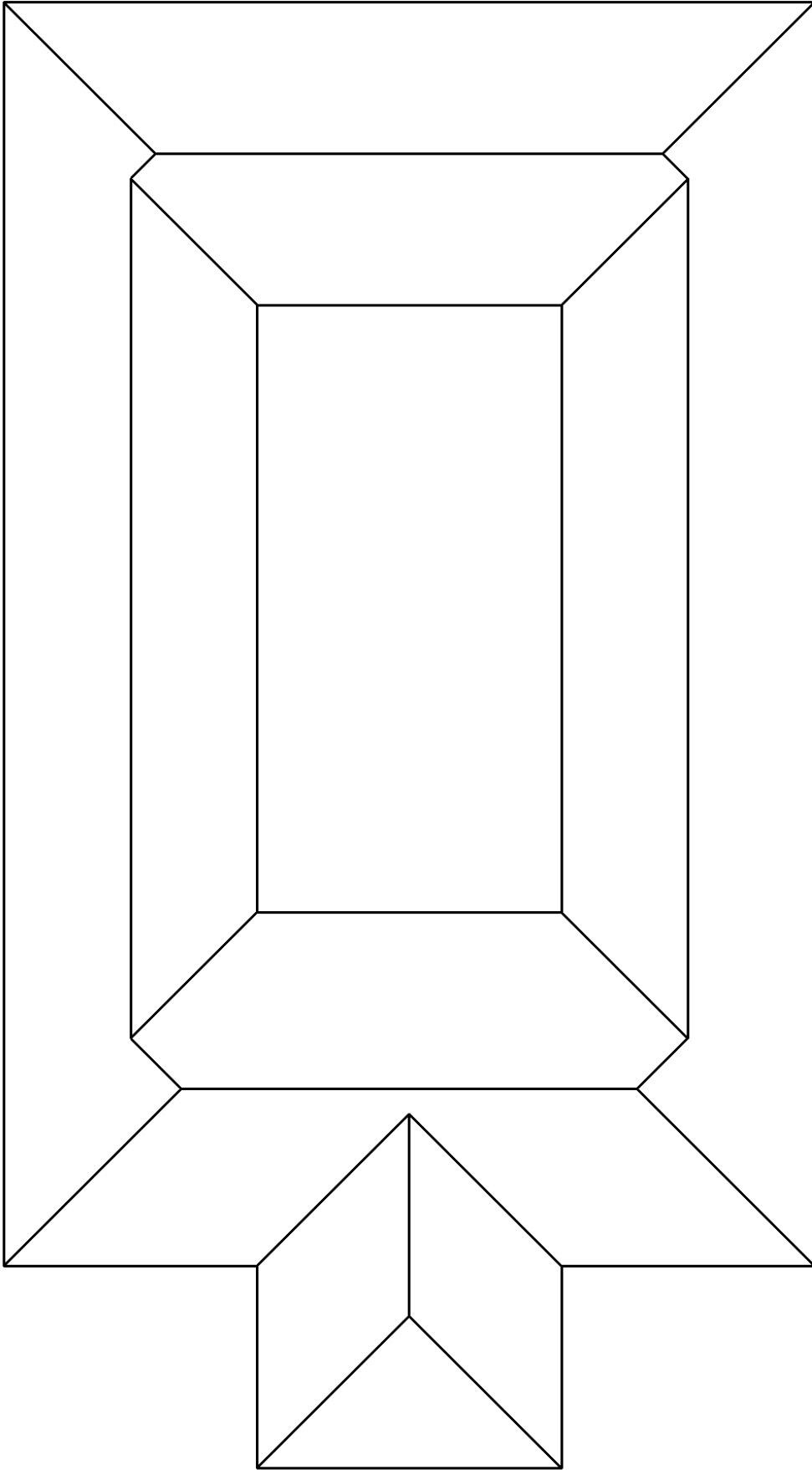
Nepřípustné žesení



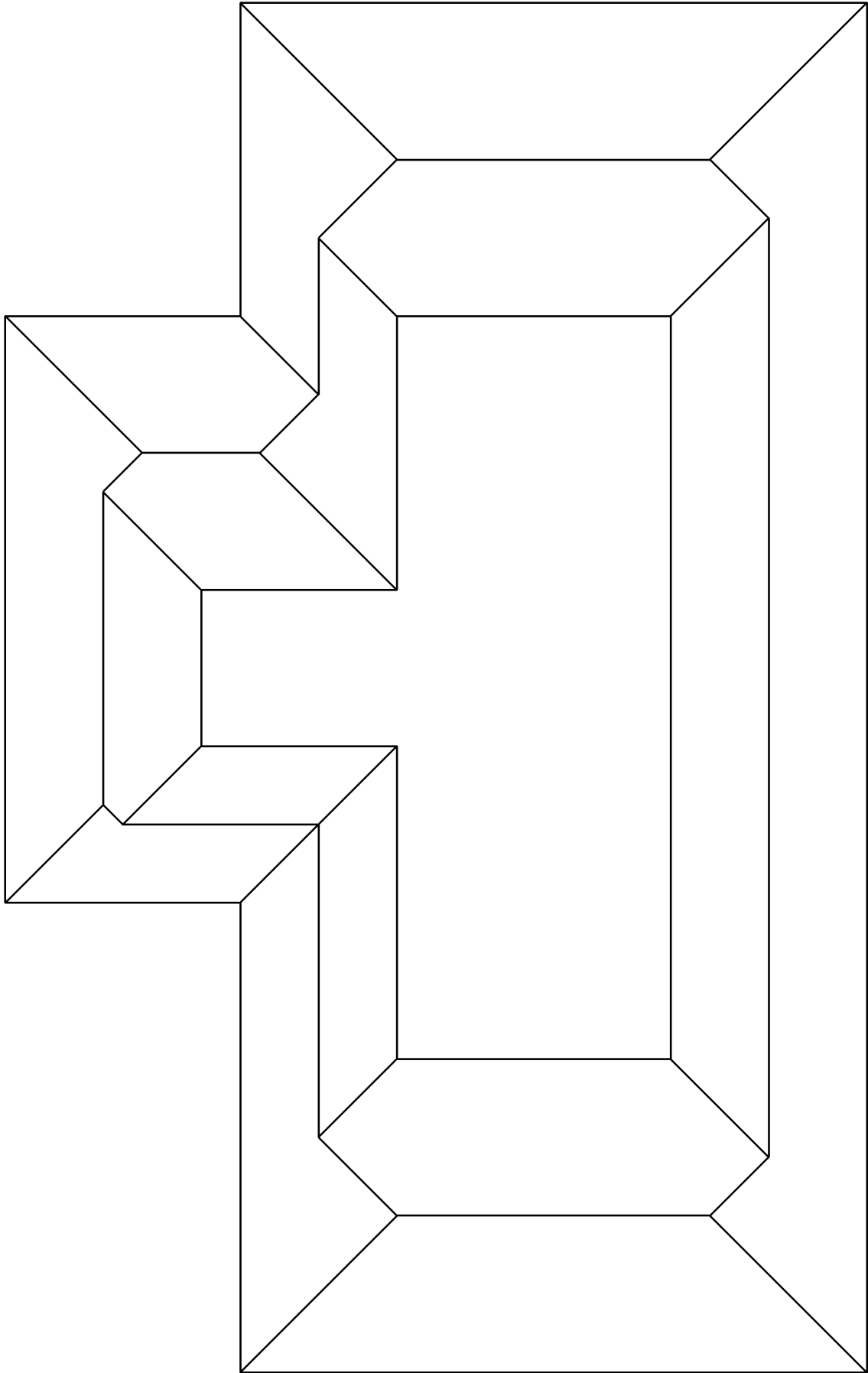
(b)



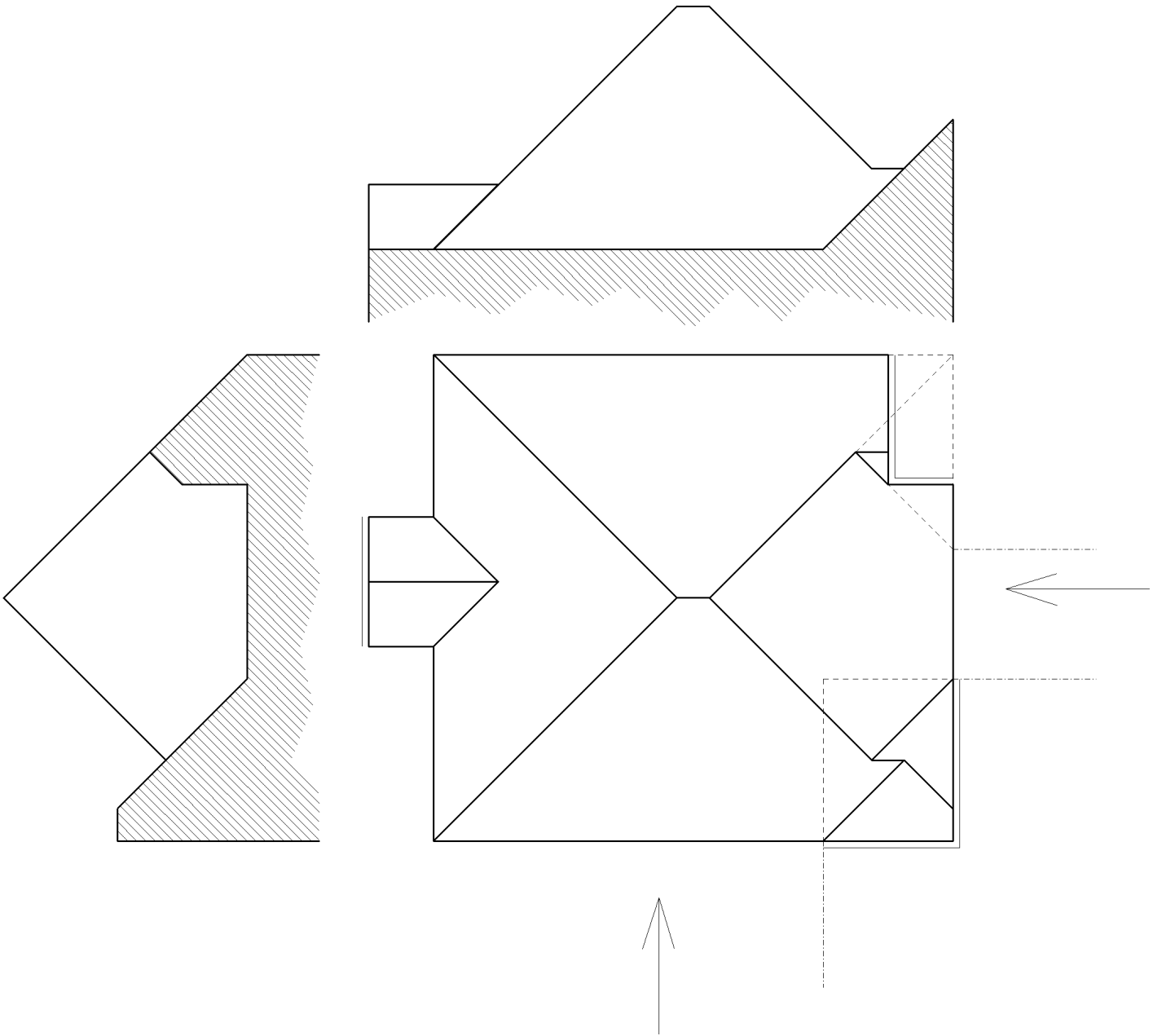
(c)



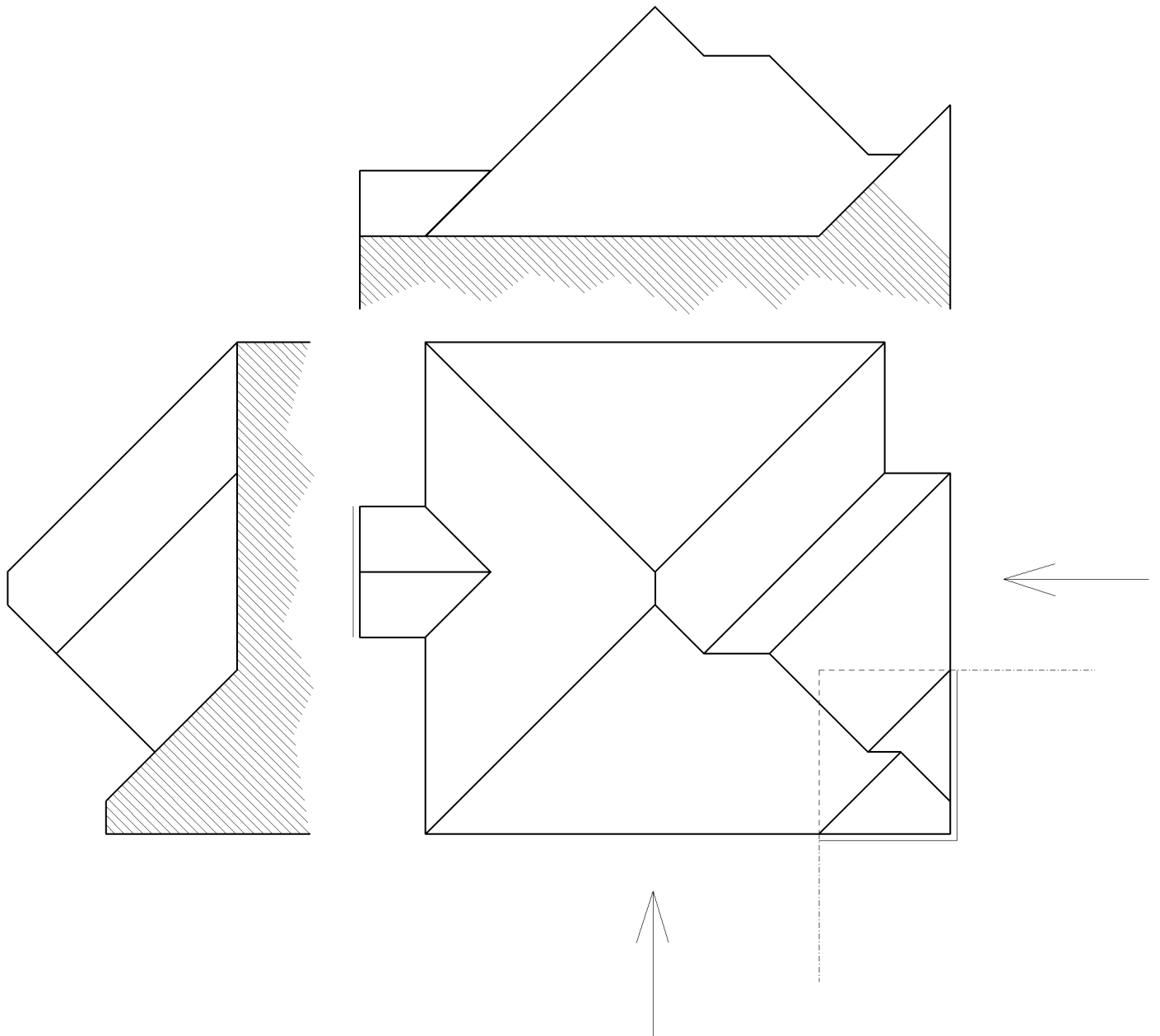
(d)



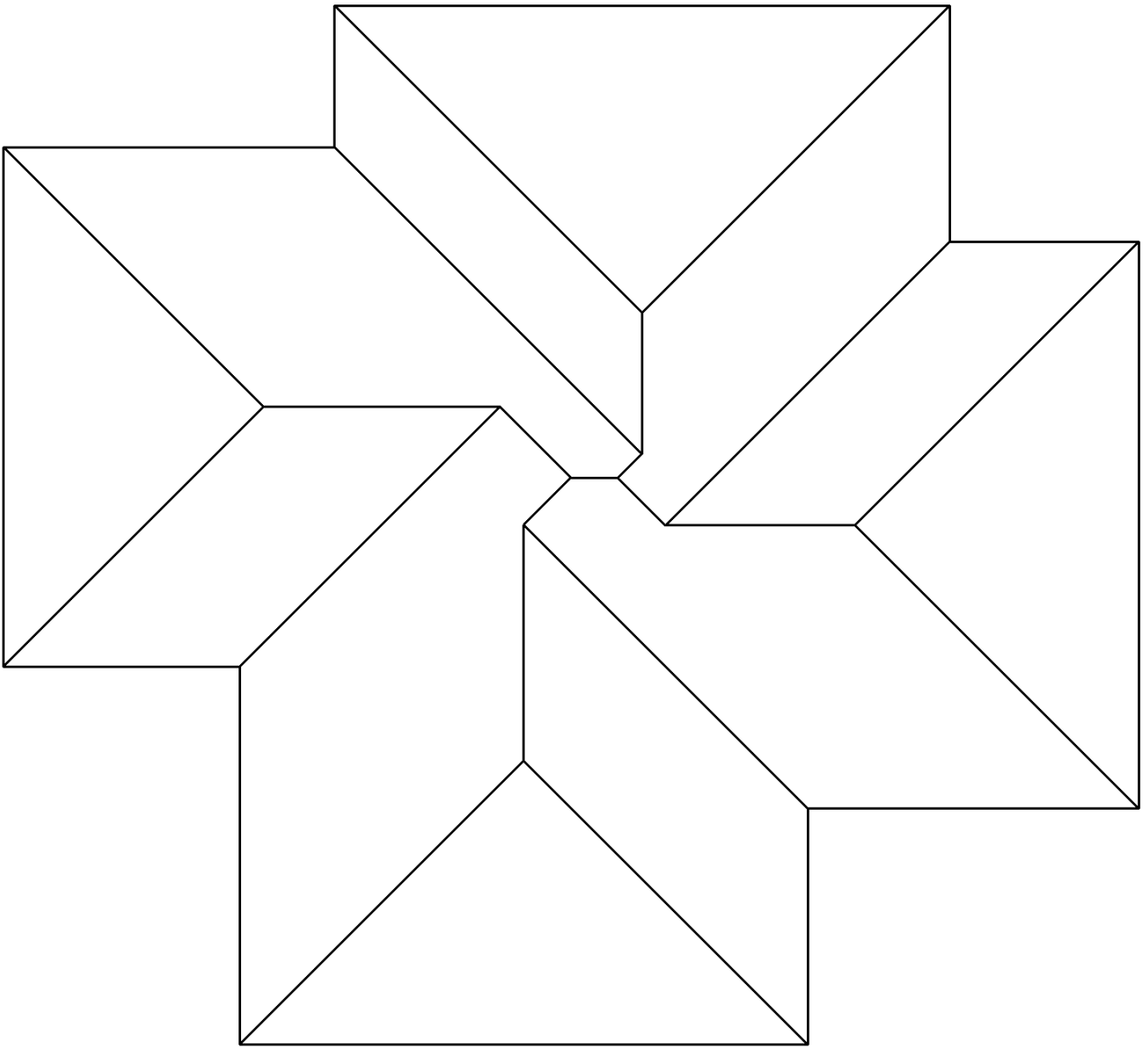
(e)



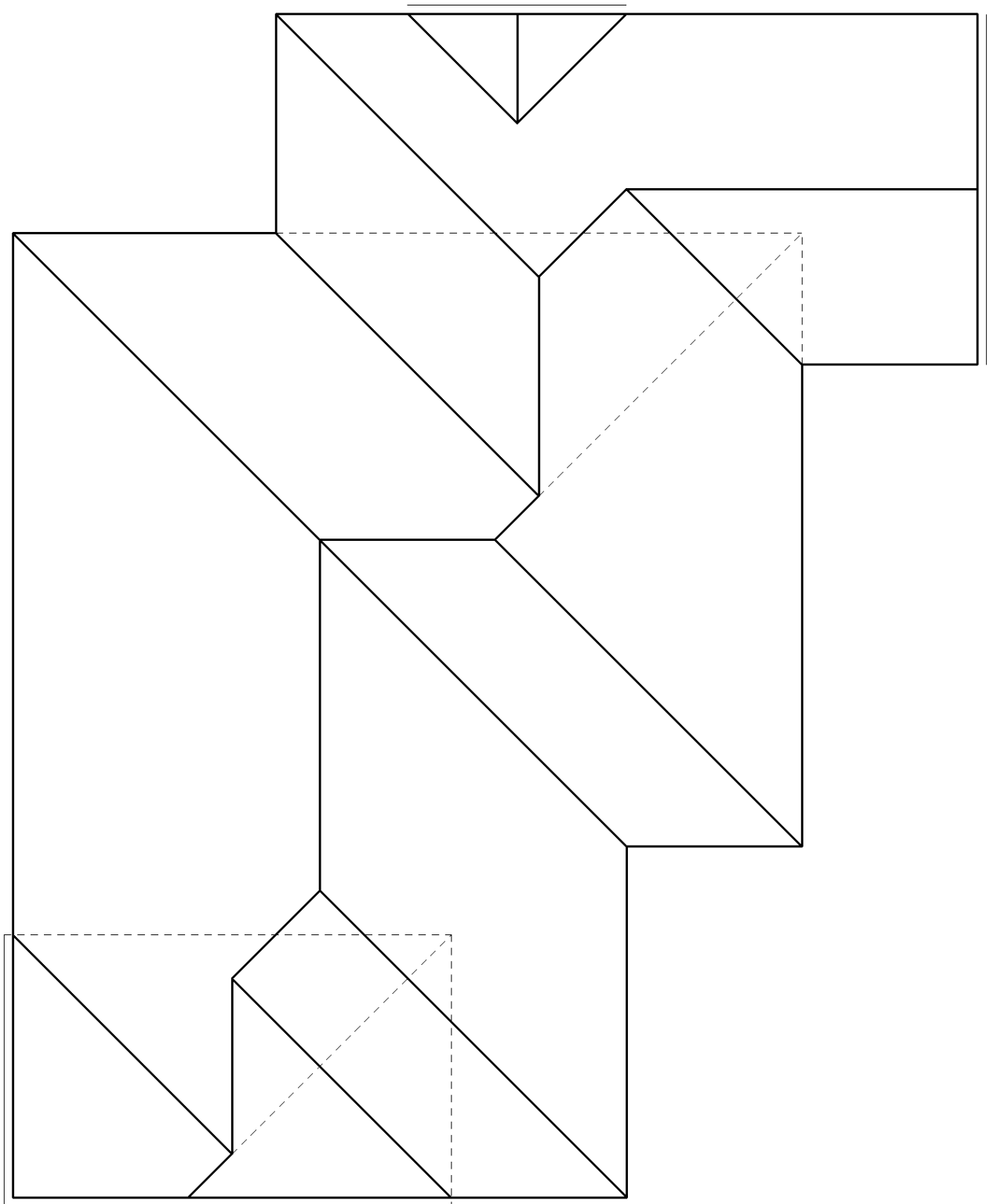
(f)



(g)

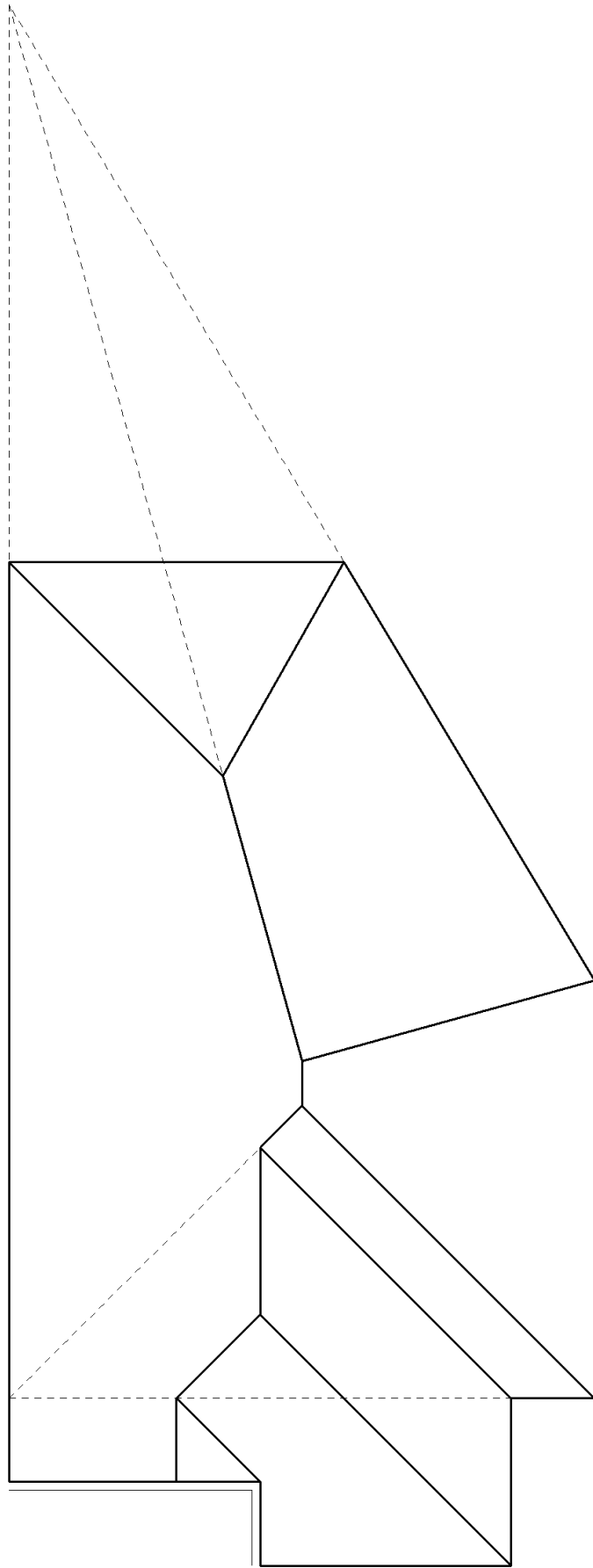


(h)





(i)



(j)

