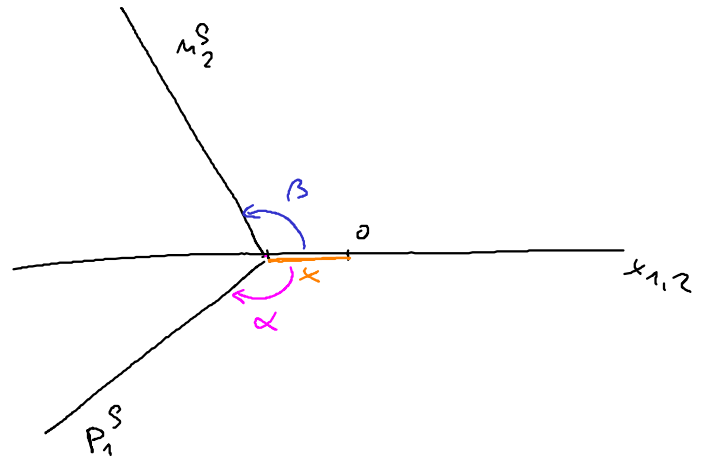
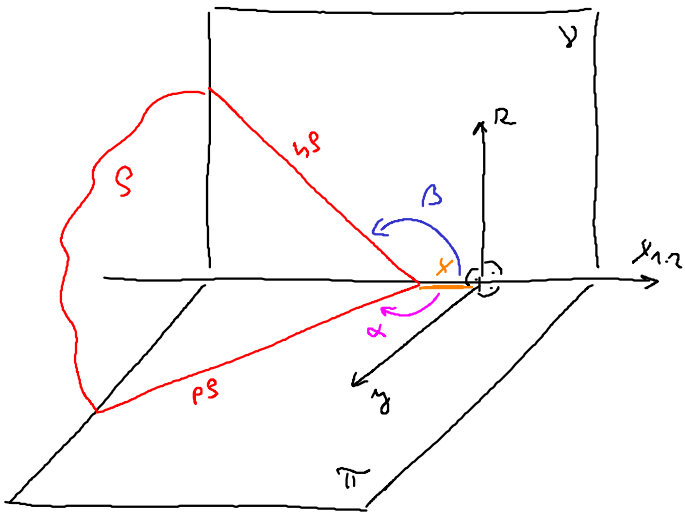
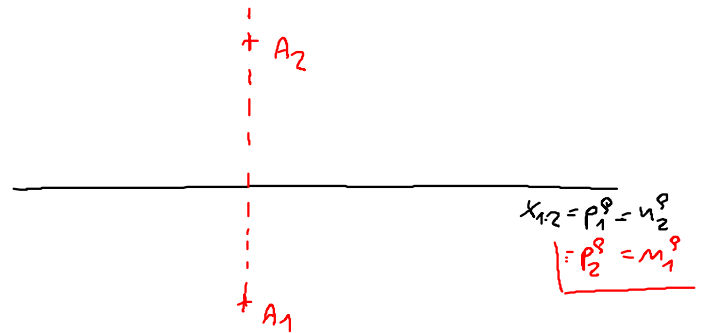
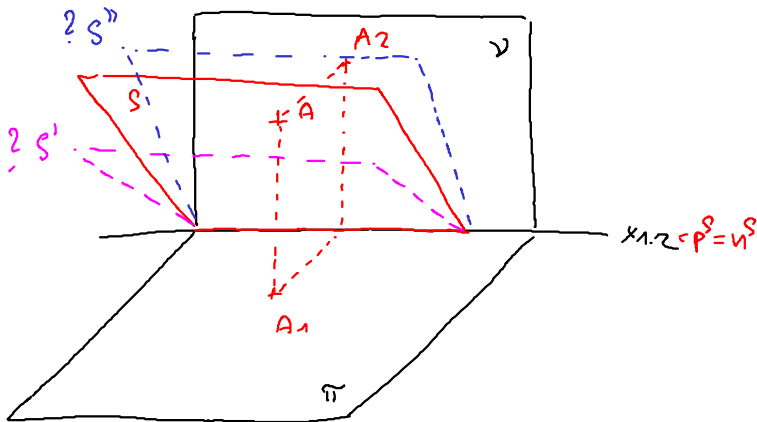


SPECIÁLNÍ ZADÁNÍ ROVINY

a) $\varrho(x, \alpha, \beta)$



b) $\varrho \supset x_{1,2}$ - MUSÍME URČIT JEŠTĚ JEDEN OBLI BOD



BOD A PŘÍMKA V ROVINĚ

Př: $\varrho(b \times l), a \in \varrho$, DÁN a_1 , SESTROJTE a_2 .

$$\left. \begin{array}{l} k \in \varrho \\ l \in \varrho \\ a \in \varrho \end{array} \right\} \begin{array}{l} I = a \cap k \\ II = a \cap l \end{array}$$

$$I_1 \in k_1 \Rightarrow I_2 \in k_2$$

$$II_1 \in l_1 \Rightarrow II_2 \in l_2$$

$$a_2 = (I_2, II_2)$$

